

Attachment 9.3.3 Native Title Settlement Parcels

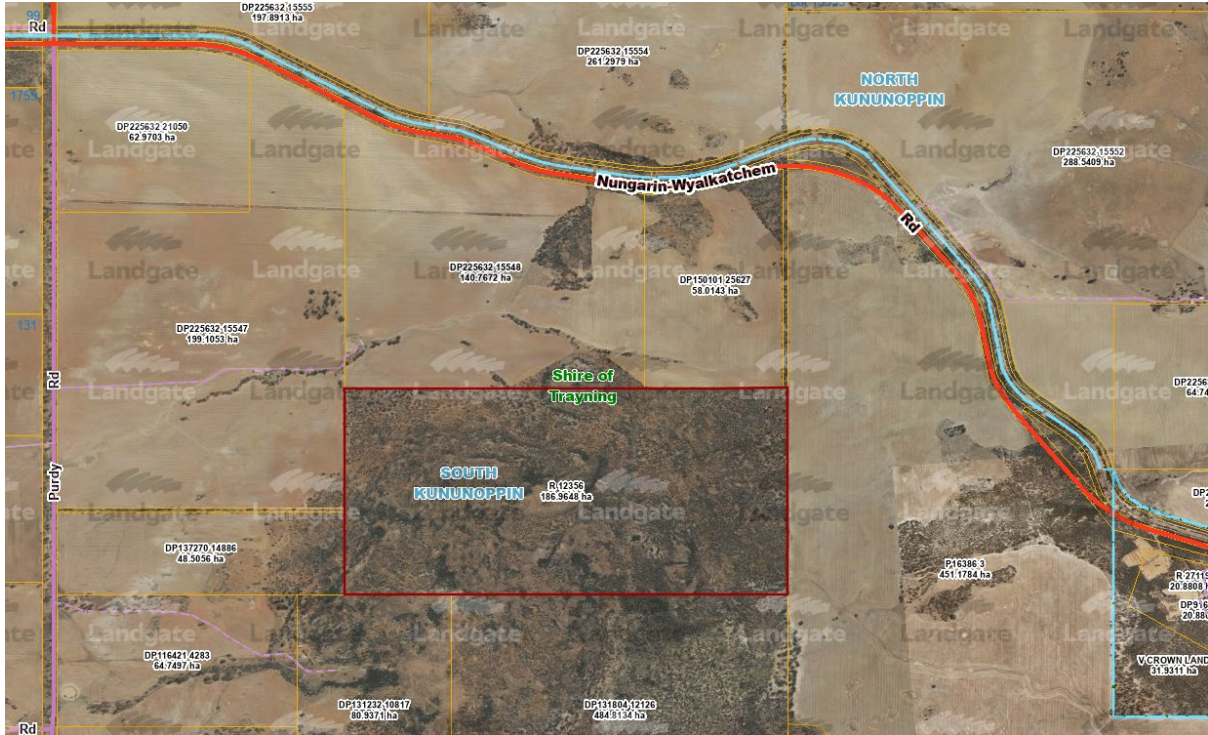
Parcel: Lot 20477 on DP87599
Area: 2.02 ha
Current Tenure: Reserve with Power to Lease



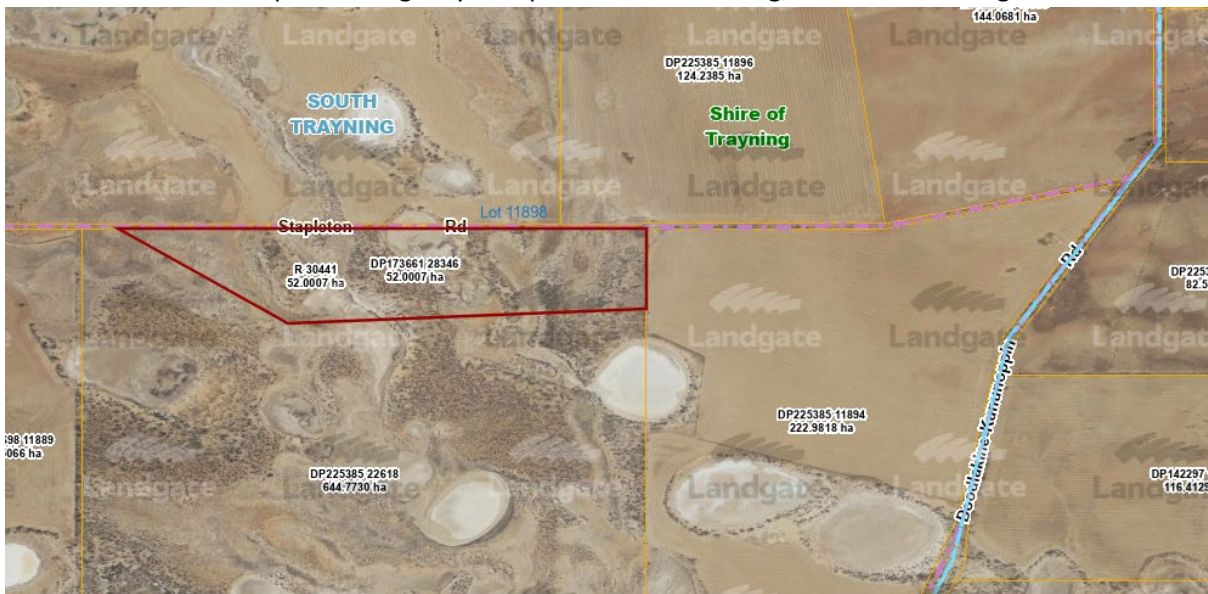
Parcel: Reserve 12639
Area: 47.27 ha, 0.38 ha, 15.2 ha and 4.04 ha
Current Tenure: Reserve with Power to Lease with a purpose of 'Parklands'
Responsible Agency – Department of Planning, Lands and Heritage



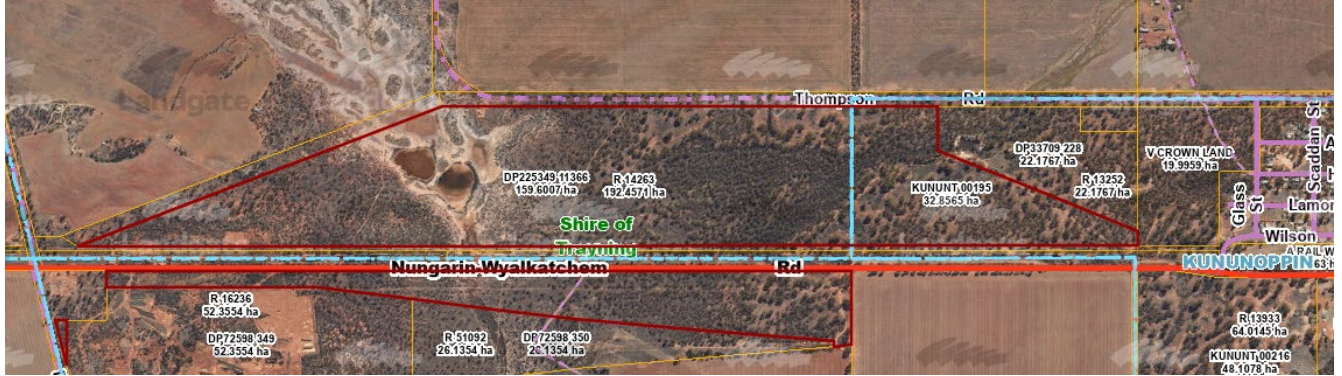
Parcel: Reserve 12356
Area: 186.96 ha
Current Tenure: Reserve with Power to Lease with a purpose of 'Water Supply'
 Responsible Agency – Department of Planning, Lands and Heritage
Note: Property not accessible by any public roads



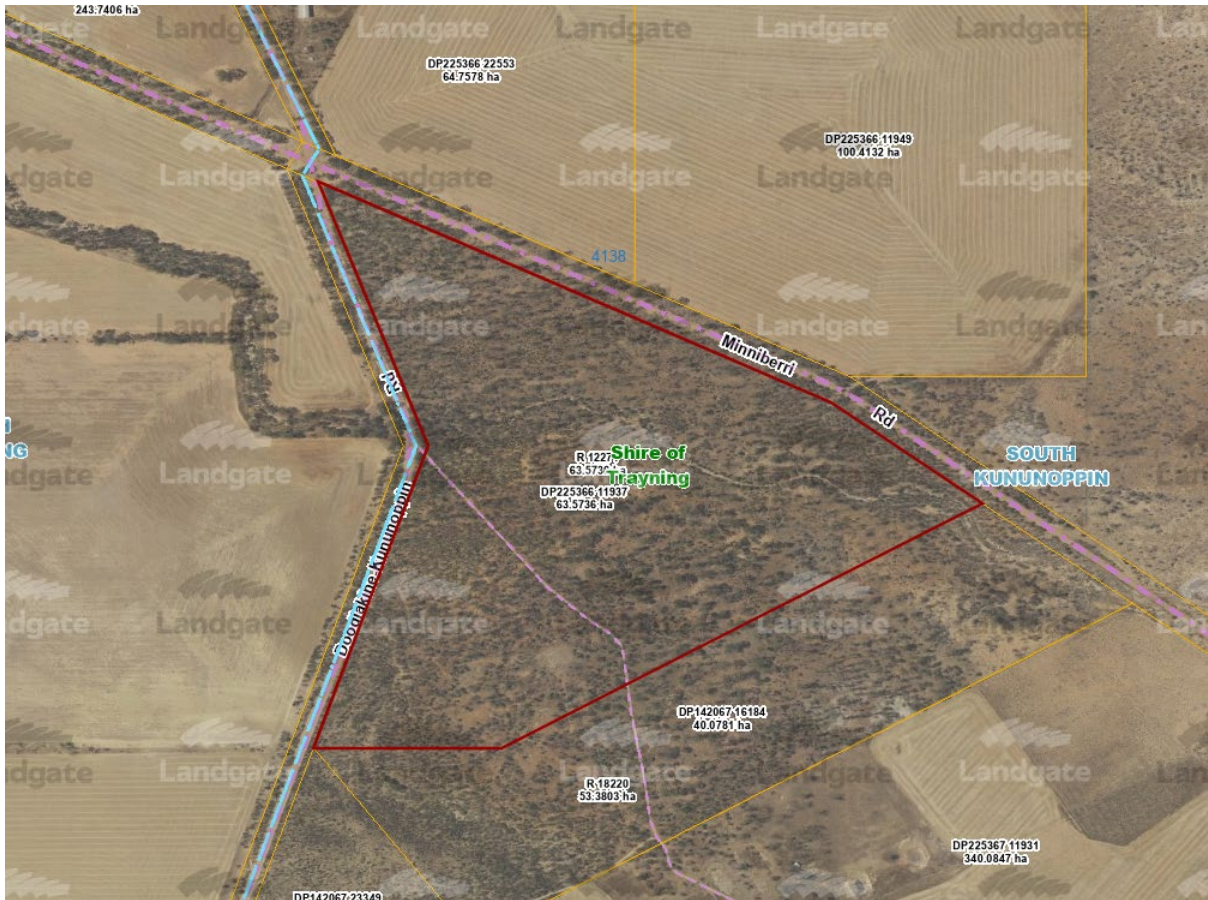
Parcel: Reserve 30441
Area: 52 ha
Current Tenure: Reserve with Power to Lease with a purpose of 'Government Requirements'
 Responsible Agency – Department of Planning, Lands and Heritage



Parcel: Reserve 14263
Area: 118.16 ha, 41.06 ha and 0.36 ha
Current Tenure: Reserve with Power to Lease with a purpose of 'Common'
 0.36 ha area 'Parcel Removal Requested'
 Responsible Agency – Department of Planning, Lands and Heritage



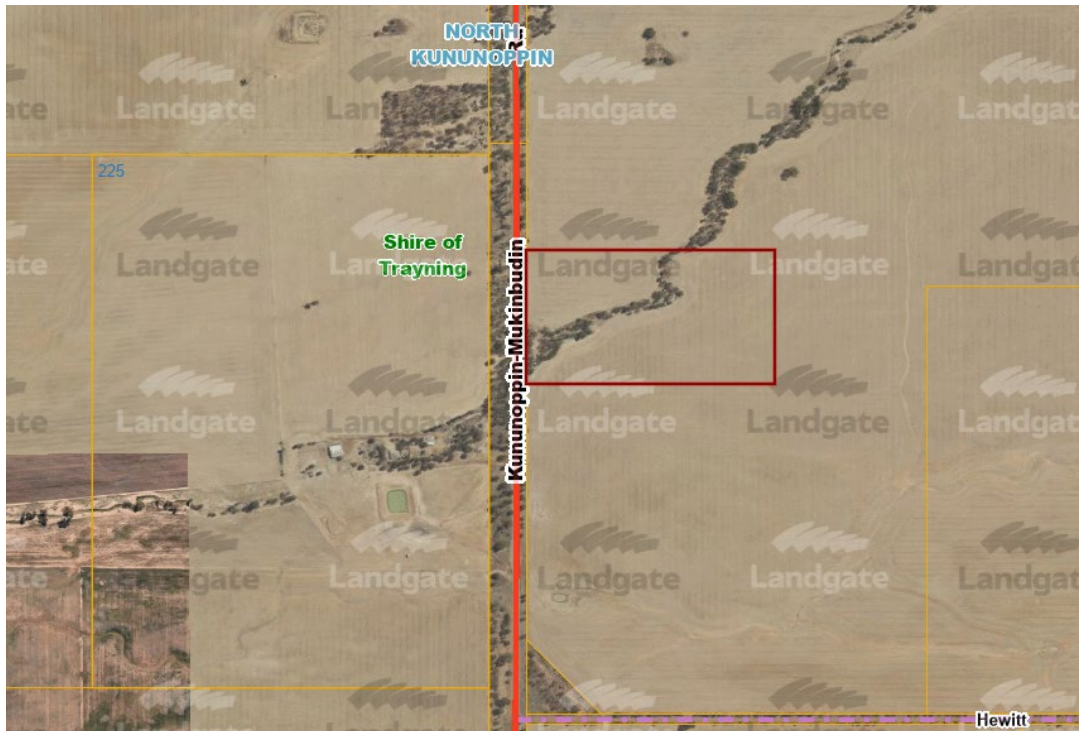
Parcel: Reserve 12271
Area: 63.57 ha
Current Tenure: Reserve with Power to Lease with a purpose of 'Water'
 Responsible Agency – Water Corporation



Parcel: PIN 954742
Area: 35.64 ha
Current Tenure: Reserve with Power to Lease
Responsible Agency – Department of Planning, Lands and Heritage



Parcel: Lot 19162 on DP86981
Area: 10.11 ha
Current Tenure: Reserve with Power to Lease



Parcel: Reserve 13606
Area: 40.87 ha
Current Tenure: Reserve with Power to Lease with a purpose of 'Water'
 Responsible Agency – Water Corporation
Note: Property not accessible by any public roads



Parcel: Reserve 11765
Area: 40.46 ha
Current Tenure: Reserve with Power to Lease with a purpose of 'Public Utility'
 Responsible Agency – Department of Planning, Lands and Heritage
Note: Property not accessible by any public roads



Parcel: PIN 957495
Area: 0.57 ha
Current Tenure: Closed Road, Reserve with power to lease



Parcel: Reserve 11217
Area: 40.47 pa
Current Tenure: Reserve with Power to Lease with a purpose of 'Water'
Responsible Agency – Water Corporation



Parcel: Reserve 13510
Area: 81.16 ha, 37.75 ha and 1.1 ha
Current Tenure: Reserve with Power to Lease with a purpose of 'Water'
 Responsible Agency – Water Corporation



Parcel: Reserve 19685
Area: 5.95 ha and 0.16 ha (within Shire of Trayning)
Current Tenure: Reserve with Power to Lease with a purpose of 'Government Requirements'
 Responsible Agency – Department of Planning, Lands and Heritage

